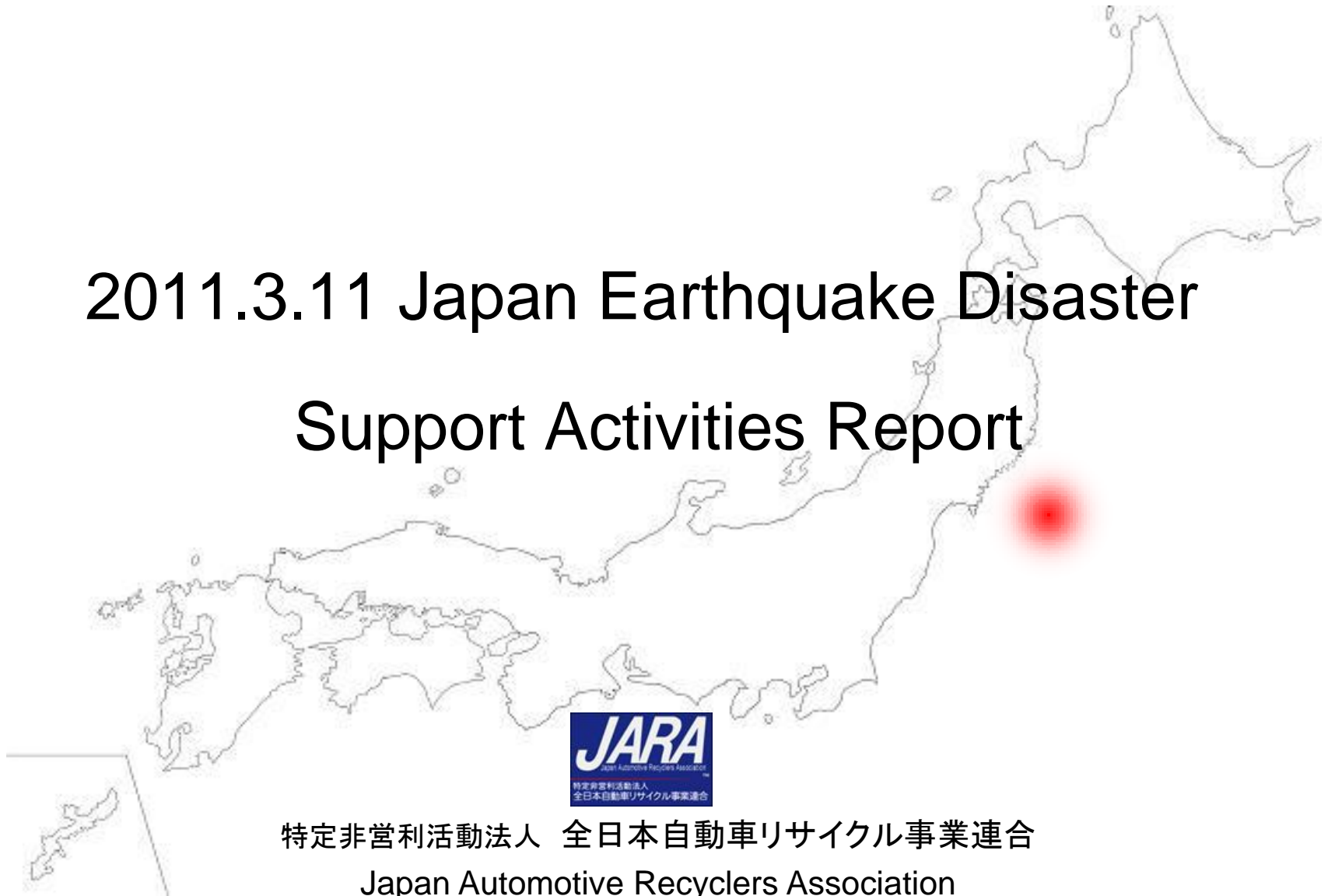


2011.3.11 Japan Earthquake Disaster

Support Activities Report



特定非営利活動法人 全日本自動車リサイクル事業連合
Japan Automotive Recyclers Association

Damage Situation

Fatality : 15,815 person

Missing : 3,966 person

Refugee : 73,249 person (1,459place)

Buildings Demolished : 118,349 house

(2011/September 30 Police report)

Vehicles affected : App 240,000 vehicles
(Iwate ▪ Miyagi ▪ Fukushima)

2011.3.11 ~

14:46 M9.0 big earthquake happened

Disaster support Team set up SPN member attended "SPN annual meeting" in Tokyo

[M9.0]



NTT 15:27 Disaster Broadband message start
NTT Telecom 16:45 start call restrictions

22:30 Tokyo Subway re-start

Niigata
[M6.6]

3/12 Many Recyclers who attended meeting came back to home by car

25:30 NTT telecom
Resume call

Miyagi
[M6.2]

3/13 Start to 1st Aid delivery



Ibaraki
[M6.2]

3/14 Support team meeting in Tokyo
1st Aid delivery arrived in Sendai

Request for cooperation from government to Automotive recycler

2011.3.11 ~

3/15 News delivered disaster situation

Shizuoka
[M6.0]



2011.3.11～

3/16 Aid delivery Staging base set up in Sendai

3/17 Start donation

3/19 Arrived rescue tracks from many place

Transportation company re-start in Tohoku

3/22 SPN system online trading error check & re-set up

3/23 Missing trading data information up

3/24 Collecting damaged vehicle managing desk set up
in sendai

Foods, fuel , other items delivered from many place
to Sendai & other Tohoku area step by step.



Chiba
[M6.0]

Ibaraki
[M6.1]

Fukushima
[M6.0]

Iwate
[6.1]

2011.3.11 ~

- 3/25 Recruit Volunteer staff
Remove the soil, sand & others
Meeting together for collecting damaged vehicles
- 3/30 vehicle collecting area Investigation
Petition for minister for damaged vehicle handling
- 4/04 start collecting damaged vehicles in Sendai, Iwanuma-city
- 4/07 after shock happened 23:56 (electricity down)
Expand more damaged in Tohoku
- 4/08 Stop collecting vehicles



Miyagi
[M6.2]

Miyagi
[M6.5]



Fukushima
[M6.4]

Miyagi
[M6.0]



Staging base building
also broken by after
big shock!!

Miyagi
[M7.4]

2011.3.11 ~

4/11 Confluence Big wave group

4/11 Confluence NGP group

Sendai City Gas re-start

4/17 Confluence JAERA group

Electricity re-start in Tohoku

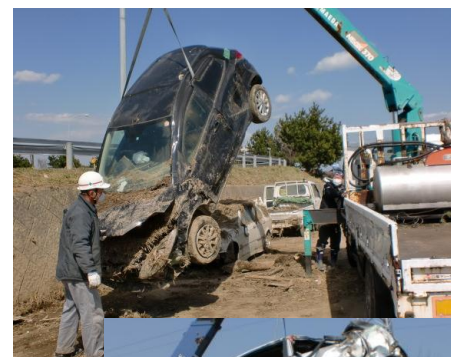
4/20 Finish aid delivery

4/25 Tohoku Shinkansen re-start

4/29 National holiday 4/29-5/5

5/09 Volunteer activity re-start

6/01 Local dismantler re-start



Fukushima
[M7.1]

Chiba

Fukushima
[M6.3]



Iwate
[M6.1]

Chiba
[M6.0]



Iwate
[M6.0]

Supporting Collected damaged vehicles by Tsunami in Sendai, Iwanuma-city

< March 12 ~ August 08.2011 >

Collected damaged vehicles : 6,777 vehicles

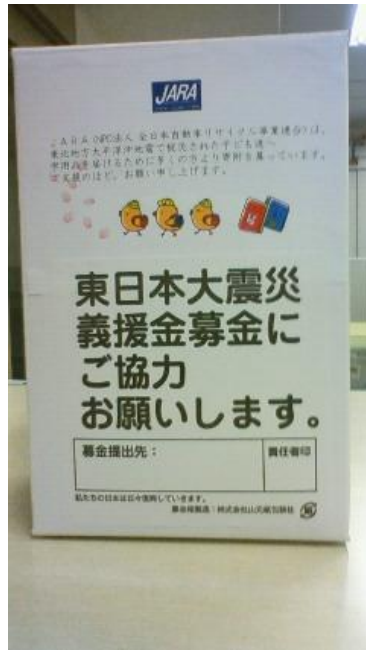
Volunteer staff : 42 person/1day

Support Truck : 4 model 16 tracks /1day

Aid delivery : Household goods. food. Fuel. Drinks
Medicine. Work equipment etc,

Support Activities for Child Victims <Donation Box>

We JARA have set Donation BOX for Child victims in Tohoku Area in Japan & coordinated with other NPO Group.



Donated to NPO company "Chikyu no Gakko"

NPO "Chikyu no Gakko" has been established in 1985 by Mothers in Sendai Area for young kids.

Memorial Ceremony <Pray For Victim & vehicles affected>



This ceremony was hold All Japanese Automotive Recyclers Association (13group)& Sendai citizen.



(July 27, 2011 at Sendai damaged vehicles stock yard)

Donner & Supporter

- REC Co., Ltd (Osaka)
- Mr. R. Taggart Murphy (Tsukuba Univ Professor)
- Ms. Shuailian Wang (China)
- UNIAUTO INC. (Taiwan)
- Car Parts .com (U.S.A)
- ARC(Automotive Recyclers of Canada)
- ICM AG (Switzerland)
- SEDA Japan Co., Ltd (Tokyo)
- Hohkoku Co., Ltd (Tokyo)
- RE•MAX research (Tokyo)
- Shinsei Co., Ltd (Osaka)
- KOBELCO Co., Ltd (Tokyo)
- Recycle-match Honshu Office (Hyogo)
- Iwama-Works Co., Ltd (Shizuoka)
- Broadleaf Co., Ltd (Tokyo)
- Mr. Shigeru Temmyo
- Mr. Satoshi Takahashi
- Mr. Taku Oshima
- Mr. Susumu Takahashi
- Mr. Sosho Kitajima
- TETE company
Ms Takako Kuroda(Kumamoto)
- Pink india company (Kumamoto)
- Takahashi Shokai Co., Ltd (Hokkaido)
- MAARA (MALAYSIAN Automotive Recyclers Association)
- SPN Inc. (Tokyo)
- EGARA (European Group of Automotive Recycling Associations)

Dear all friends,
Thank you very much for your attention
& your heart to Tohoku Japan.
We never forget your heart in this time
forever.

J A R A
Japan Automotive Recyclers Association